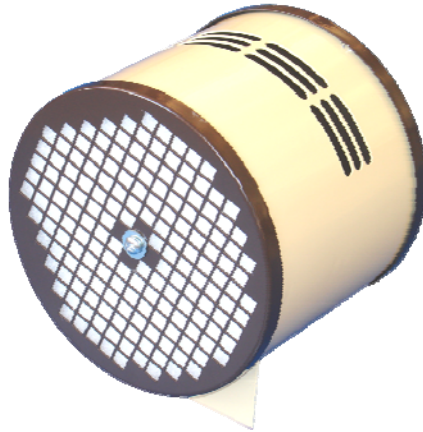


## INSTRUCTIONS FOR THE MC100



The MC100 can be used on a bench or shelf, and using the MCC cradle (optional accessory) it can be wall mounted.

**Before using the unit, it is advised to do a quick test to help you determine when the filter pad needs replacing.**

Turn the filter on when in fixed position.

Place this instruction sheet over the air intake area; leave for approximately 10 seconds and then switch the unit off. Simply note the time (in seconds) it takes for the paper to fall away from the grille (generally 30 to 40 seconds).

Repeat this test periodically until the time reduces to half the original time-  
This indicates the filter requires changing.

To change the filter, all you need is a Phillips head screwdriver. It is easy to change the filter with the unit on the bench rather than while it is still suspended. Simply unscrew the bolt holding the base plate in position and remove the base plate. Remove the old filter and dispose to waste. Place the new filter into the filter cavity, replace the base plate and screw the retaining bolt home.

**REMEMBER TO WEAR YOUR FACEMASK WHILST PERFORMING THIS TASK**

**Microclene Australia**  
Cleaning the air you breathe.